

# History, Landscape Change and the Social Dimensions of Restoration in the Biscayne Bay Area

Mason Bradbury, Florida International University

Research Mentor: Michael Ross

## Goals

- Analyze long-term landscape change and sociopolitical drivers of change at two Biscayne Bay-area restoration sites, the Deering Estate and Wagner Creek
- Critically examine social and institutional challenges and goals of contemporary restoration projects

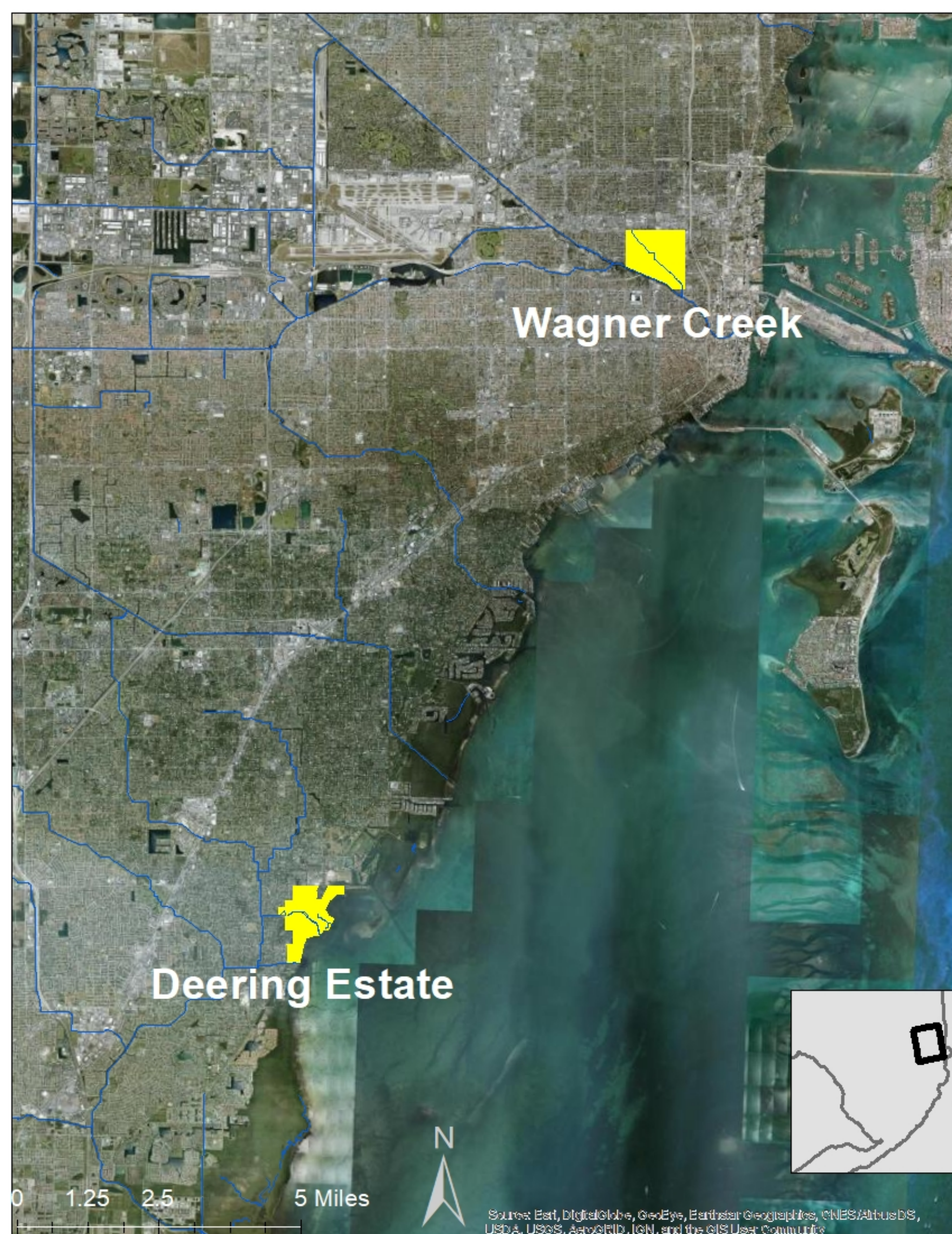


Figure 1. Deering Estate and Wagner Creek study areas

## Research Methodology

- Measure change in vegetation and other landscape features using 19<sup>th</sup> century government survey maps, early 20<sup>th</sup> century aerial photos, and present-day land use/land cover maps
- Use archival research to explore drivers of landscape change
- Conduct key informant interviews and analyze restoration planning documents

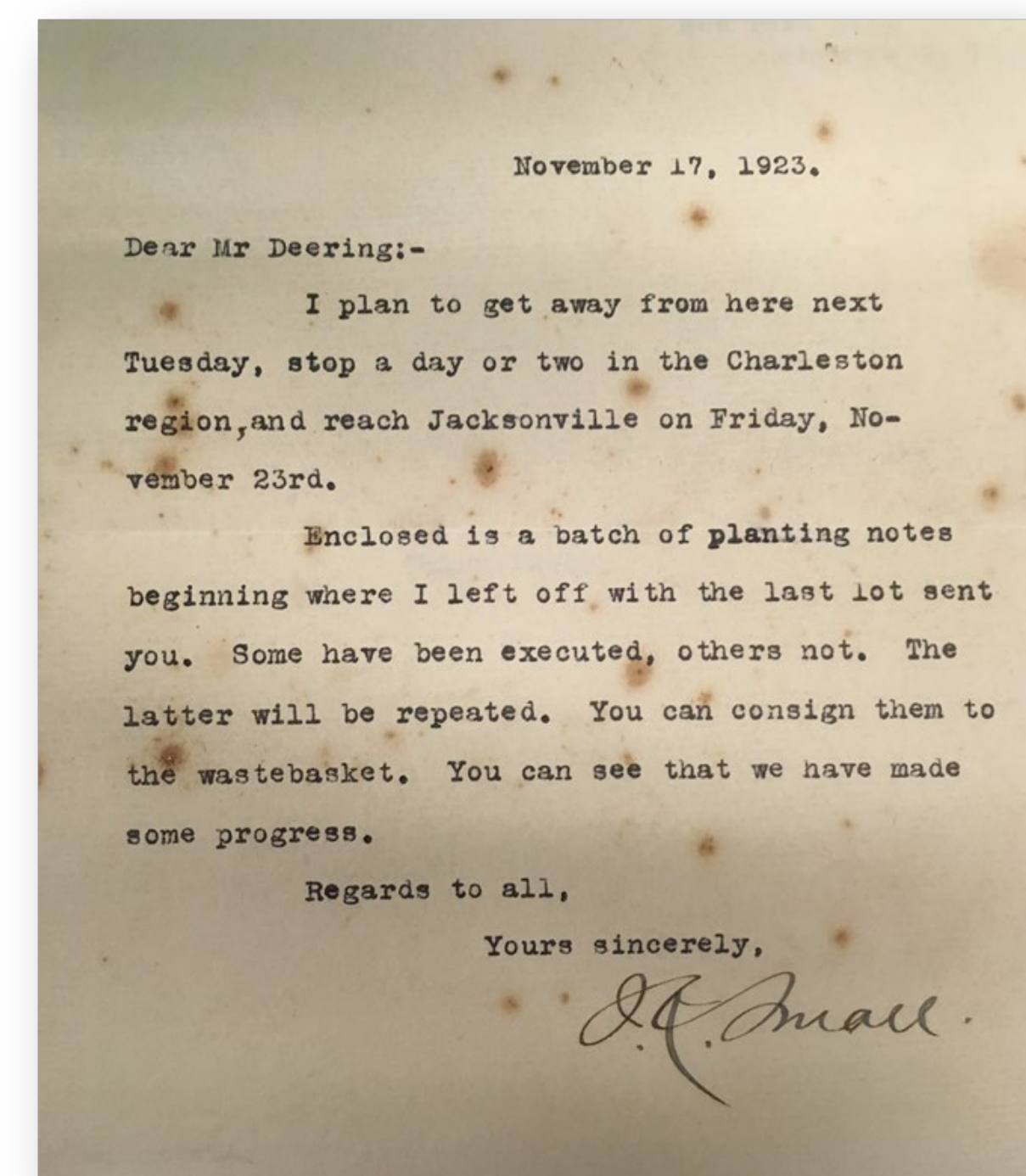


Figure 2. Archival letter regarding the Deering Estate landscape. Source: the archives at History Miami

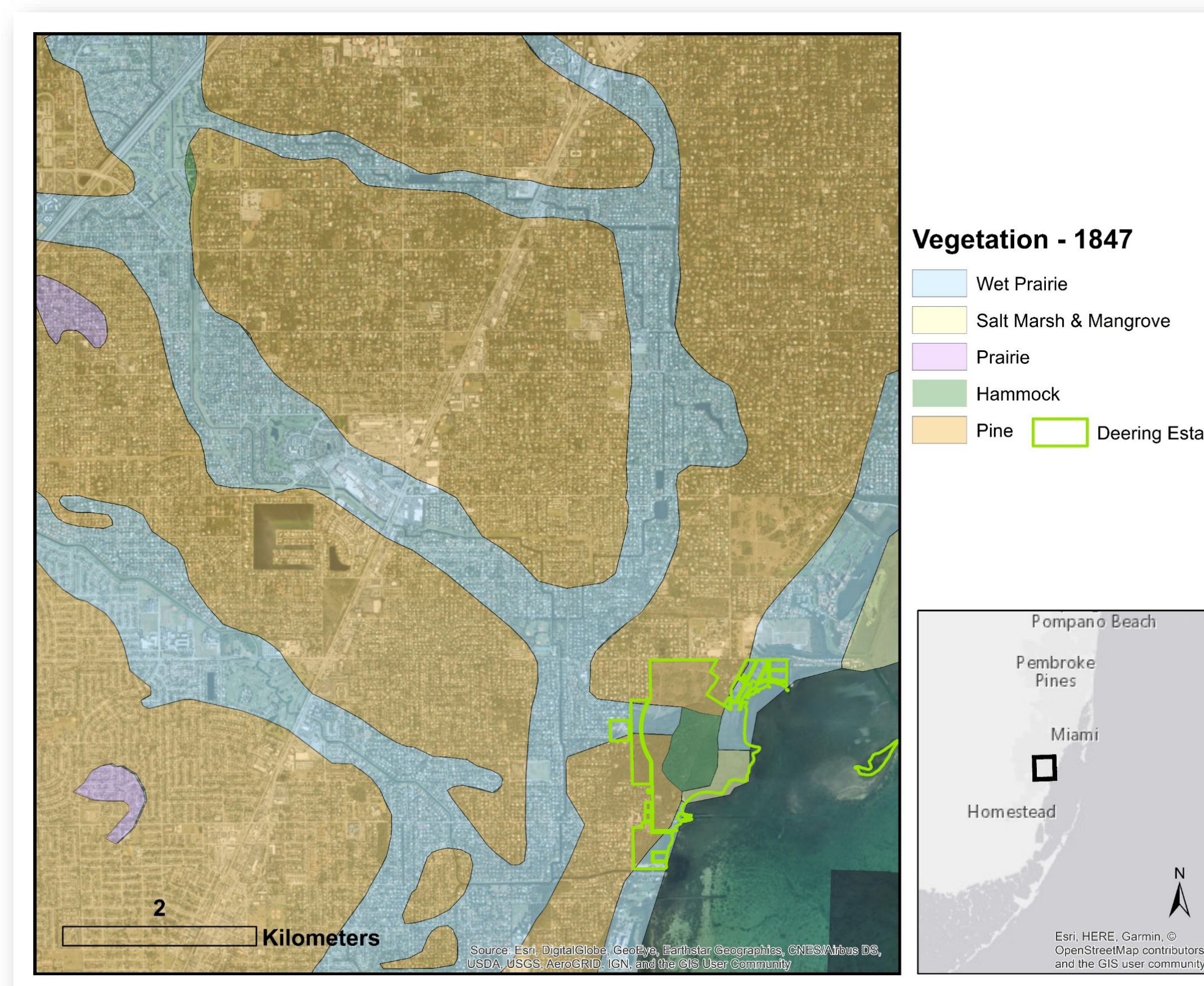


Figure 3. 1847 vegetation boundaries for the Deering Estate area

## Results

- Natural vegetation expanded since 1900 at the Deering Estate, while Wagner Creek suffered declining water quality and vegetation conversion for development.
- Drivers of landscape change included the early 20<sup>th</sup> century environmental movement, the 1920s Miami Real Estate Boom, and struggles over racial segregation.
- Preliminary results suggest that at the Deering Estate, there are tradeoffs between land management goals and restoration targets.



mbrad045@fiu.edu



<http://crestcache.fiu.edu>



*This material is based upon work supported by the National Science Foundation under Grant No. HRD-1547798. This NSF Grant was awarded to Florida International University as part of the Centers of Research Excellence in Science and Technology (CREST) Program. Any opinions, findings, and conclusions or recommendations expressed in this material are those of the author(s) and do not necessarily reflect the views of the National Science Foundation.*